



U-HOMES<sup>®</sup>

Pursuit of  
**Happiness**



**THE FIRST SUSTAINABLE VILLA PROJECT**  
in the heart of Alappuzha





## Pursuit of Happiness: Your Gateway to Happiness

Welcome to Pursuit of Happiness, where luxury meets sustainability in the serene locale of Thalavady, Alappuzha. Nestled amidst nature's tranquility, our meticulously crafted villas offer a harmonious blend of premium amenities, eco-friendly features, and exquisite detailing, ensuring a lifestyle of unparalleled comfort and convenience.

The project comprises 11 villas in 74.42 cents with options ranging from spacious 3 BHK to luxurious 4 BHK layouts, situated on 4.48 to 6.34 cents land each. Join us as we embark on a journey to discover the epitome of happiness.





05





## Craftsmanship is **Happiness**

Uninest Developers Pvt Ltd, established in 2023, is the parent company comprising three verticals: U Designs, U Infra, and U Homes. In 2023, U Designs completed an impressive 1.3 million square feet of construction designing, showcasing their commitment to quality and excellence. Currently, the company is actively involved in providing design support to various large-scale projects in Pan Kerala. Backed by a dedicated team of seasoned professionals, each an expert in their respective fields, Uninest Developers ensures unparalleled craftsmanship. The project, upon completion, would be a testament to excellence, with meticulous planning and execution. The project's structural engineer is Mr. S. Ashok, based in Europe.









In Alappuzha,  
**Happiness**  
is a way of life

In the heart of Alappuzha, where happiness flows like its interconnected canals, lies our maiden villa project. Nestled amidst the town's scenic beauty and serene ambiance, our villas offer a tranquil retreat from the bustle of city life.

Strategically located, our villas boast close proximity to Alappuzha's most prestigious schools and hospitals, ensuring convenience within a mere 5-minute drive. Moreover, major roads like NH66 and the Alappuzha-Madurai road are easily accessible, facilitating smooth travel to Ernakulam and Kottayam without the hassle of town traffic. In addition, our location provides easy access to all religious centers nearby, enhancing the spiritual essence of living in Alappuzha. With our villas, immerse yourself in the charm of this vibrant town while enjoying seamless connectivity to essential amenities and destinations.







# Health is Happiness

In our pursuit of the adage Health is Happiness, we have meticulously crafted a range of amenities to enrich the well-being of our residents. Each element is thoughtfully designed to foster a harmonious balance of mind, body, and spirit.

- Step into our dedicated meditation and yoga space, a sanctuary for mental serenity and inner peace.
- Embrace physical fitness in our fully equipped gymnasium, tailored to promote vitality and strength
- Dive into leisure and exercise with our inviting swimming pool and children's pool, offering refreshing recreation for all ages.
- Embark on a journey of wellness on our jogging track, for an inspiring outdoor activity and rejuvenation.
- Rest assured with our stainless steel water tank, ensuring a constant supply of clean and hygienic water for your family's well-being.
- Experience inclusive living with customized features such as elderly and wheelchair-friendly design, ensuring effortless accessibility for all members of our community.
- Kitchen Garden and fruit tree in your land for enhancing the quality of health

With a steadfast commitment to health and wellness embedded in every aspect of our design and amenities, our villa project cultivates an environment where happiness flourishes through holistic living.









## Sustainable living for lasting **Happiness**

Experience the Happiness of Sustainable Living in Our Villa Project! With solar panels for every villa, auto-level control for water tanks and rainwater collection, we're leading the way in efficient water and energy use. Breathe easy with low VOC paint and enjoy cooler interiors thanks to heat-reducing external paint. Let motion sensor lights guide your way in our energy-smart common areas. Join us in building a greener, happier future!





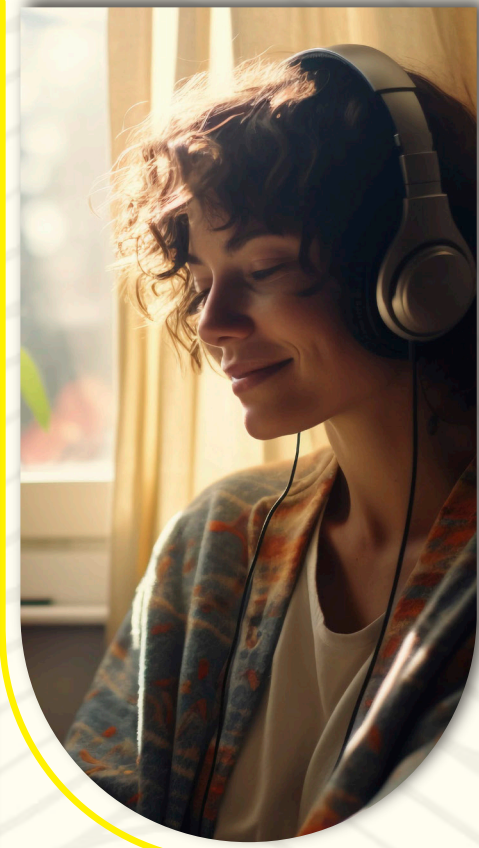


## Investing in a Quality Build ensures enduring happiness

Experience the epitome of refined living at Happiness Homes, where the fusion of durability and design excellence creates a sanctuary unlike any other. Our distinctive curved structures are meticulously crafted to harmonize stability with aesthetic allure, promising enduring elegance. Revel in uninterrupted serenity beneath expansive sunshades engineered to combat even the most intense sunlight, ensuring your comfort remains uninterrupted.

Every facet of Happiness Homes reflects our unwavering commitment to quality. From meticulously selected bricks renowned for their timeless appeal and exceptional durability to innovative RCCB technology prioritizing your safety, each detail is meticulously curated to elevate your living experience. Invest in Happiness Homes for lasting value, unparalleled comfort, and the assurance of a home where your safety always comes first.





## Club House Amenities

- Mini theatre / VR Gaming zone • Kids' pool
- Common swimming pool • Meditation/ Yoga space
- Multi purpose hall • Barbeque corner • Caretaker space
- Terrace garden and Party space • Board Room
- Board games: Chess, Carrom • Billiards Table • Library
- Fully equipped air-conditioned gymnasium






## EXCLUSIVE FEATURES

- 5m wide internal roads
- Ceiling height of 11 feet for each floor
- Pneumatic pressure pumps
- Cable free layout
- RCC framed structure
- Porotherm / clay brick for walls
- Damp proofing
- Digital entrance door locks
- Solid waste management system (Incinerator/ Organic Waste Converters)
- CCTV surveillance
- KWA water point in Kitchen
- Common water treatment plant
- Automated entrance gates
- Smart access entry to clubhouse

## GREEN FEATURES

- Integration of solar panels for each villa
- Provision of electrical car charging points in each villa
- SS304 Grade stainless steel water tanks
- Motion sensor lights strategically placed in selected common areas
- Auto level control implemented for overhead water tanks
- Rainwater collection tanks and recharging pits
- Dual flushing systems installed in toilet cisterns
- Usage of low VOC content
- Heat reduction external paint on top of elastomeric primer

## ALFRESCO DELIGHTS

- 
- Jogging track along driveway
  - Swing lawn
  - Rock climbing
  - Basketball hoop space
  - Leisure sitting benches
  - Children's play area



# SPECIFICATIONS

**Main Entrance:** Tata Pravesh steel door / engineered prehung flush door

**Internal Doors:** Engineered pre-hung flush doors

**Balcony:** Fully glazed aluminium sliding doors with toughened glass

**Windows:** Powder coated aluminium windows

**Generator:** Generator backup covering essential appliances and lighting upto 1200 W

**Electrical:** Modern concealed wiring with Legrand/equivalent modular switches

6/16 Amp socket points controlled by RCCB and MCBs  
Provision for geyser and exhaust fans in bathrooms and kitchens

Independent energy metering for each apartment

**Toilet:** Luxurious Kohler/Grohe/American Standard/equivalent CP bath fittings

Single lever diverters with showers in all bathrooms

Hot and cold mixer taps for perfect temperature balance in wash basins

Sleek wall-hung sanitary fixtures

Geberit/Kohler/Grohe/equivalent concealed cisterns

**Kitchen & Utility:** Polished granite counters

- Hot water provision for sink
- Double bowl single drain board sinks
- Electrical and plumbing provisions for water purifiers and washing machines

**Flooring:** Vitrified tiles in living area, dining, kitchen and bedrooms

- Ceramic tiles for balcony

**TV Point/Internet Point:** TV points in the living room and Master bedroom

- Dummy conduits for future internet cabling in the dining/living area.

**Telephone:** Telephone points in the living room.

**Walls & Ceilings:** Internal walls and ceilings with two coats of acrylic emulsion

- Vitrified tiles for bedroom toilet walls up to the false ceiling

**Grills & Railings:** Mild steel safety grills for windows

- Sturdy GI steel/RCC balcony railings with a minimum height of 120 cms



# Site Layout Plan





# Location Map



## PROXIMITY CHART

- Believers Church English Medium School – 1.0 KM
- St. Mary's Residential Central School – 2.6 KM
- SDV English Medium HSS – 3.5 KM
- Thalavady Bus Stop (SH 40) – 0.60 KM
- Providence Hospital – 1.0 KM
- Sahrudaya Hospital – 3 KM





# U.Infra

Uninest Infra Pvt Ltd specializes in a comprehensive range of construction activities, catering to both residential and commercial sectors. We continually strive to exceed industry standards and deliver exceptional results that enhance communities and improve the built environment.



# U-HOMES<sup>®</sup>

U Homes, where your dream of owning a perfect home becomes a reality. As a premier real estate development brand under Uninest Developers Pvt Ltd, we're committed to crafting spaces that resonate with your lifestyle and aspirations. With meticulous attention to detail and a passion for excellence, U Homes strives to redefine modern living experiences.



U Designs is the architectural brand name proudly associated with Uninest Developers Pvt Ltd. Specializing in innovative and cutting-edge architectural solutions, U Designs embodies creativity, functionality, and sustainability. With a focus on aesthetics, functionality, and environmental responsibility, U Designs is at the forefront of shaping the built environment for a brighter future.

**The Nest, First floor, Kalpaka Trade Centre, Sanathanapuram PO, Alappuzha.**

☎ 8714 150 333

sales@uninest.in  
www.uhomes.co.in



Registration Number  
K-RERA/PRJ/ALP/053/2024  
rera.kerala.gov.in



Estd. 1941